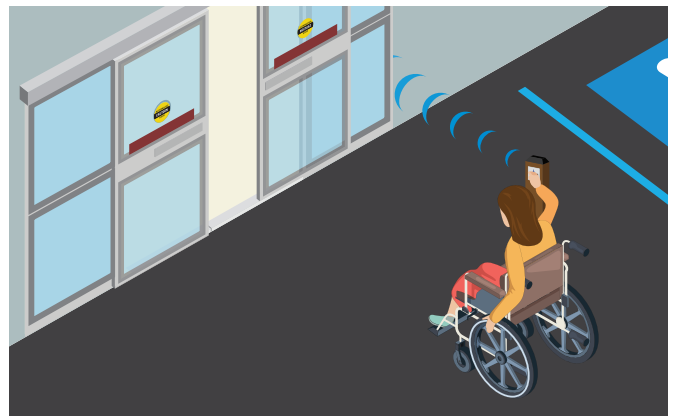


# 4.5 INCH ROUND & SQUARE PUSH PLATES

## STAINLESS STEEL ACTUATORS



### PRIMARY APPLICATIONS



### DESCRIPTION

BEA's 4.5 inch round and square push plates improve overall access, enhance accessibility for those with limited mobility or disabilities and seamlessly integrate with an automatic door's activation.

These ADA-compliant push plates are available in a variety of popular design options, including alternative accessibility artwork.

This product may be hard wired to the door operator or connected to BEA's line of wireless transmitters.

### FEATURES & BENEFITS

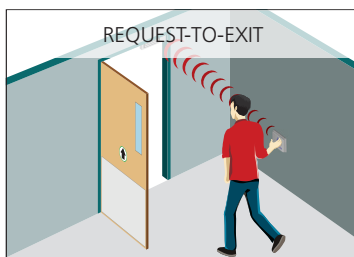
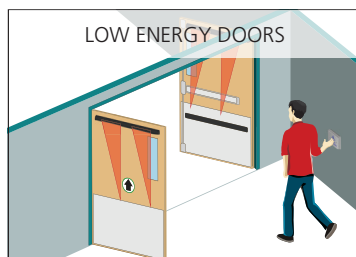
- $\frac{1}{16}$  inch thick stainless steel for maximum durability
- Concealed fasteners to minimize vandalism
- Complete kits available including plates, mounting boxes and optional wireless devices for ease of ordering
- Various text, graphic and logo options available
- Compatible with both surface and flush mount boxes



BEA, Inc.  
RIDC Park West  
100 Enterprise Drive  
Pittsburgh, PA 15275-1213

Customer Service: 800.523.2462  
Technical Support: 800.407.4545  
[www.BEAinc.com](http://www.BEAinc.com)

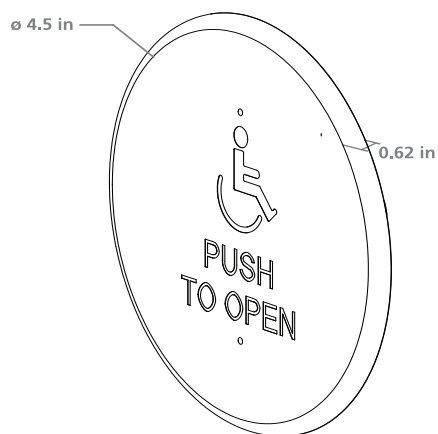
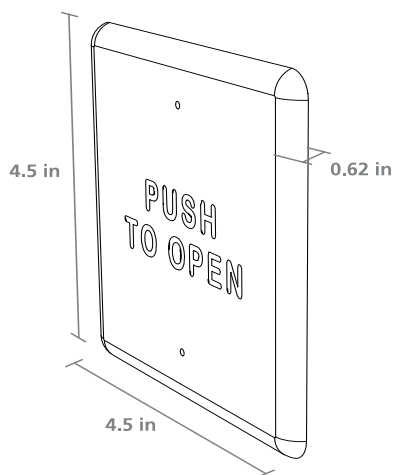
## APPLICATIONS



## TECHNICAL SPECIFICATIONS

Faceplate Material	16 gauge, 304 2B Stainless Steel
Backplate Material	1/8 inch thick, Aluminum
Mounting Screws	Stainless Steel, 6-32 x 1 in & 8-32 x 1 in Allen Head Size: 5/64
Cherry Switch	Single-pole, 15 A, COM / NO / NC, UL Recognized
Compatible Wireless Frequencies	900, 433 or 300 MHz

## DIMENSIONAL DRAWINGS



## RELATED PRODUCTS



**10PBR45**  
"PUSH TO OPEN"  
TEXT ONLY



**10PBR451**  
"PUSH TO OPEN" TEXT  
& HANDICAP LOGO



**10PBR45LL**  
HANDICAP LOGO  
ONLY



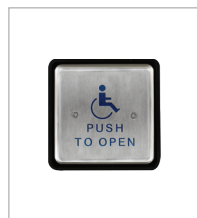
**10PBR4510**  
PLAIN  
FACE



**10PBS2GBLK**  
LOW PROFILE "PUSH  
TO OPEN" TEXT ONLY



**10PBS45**  
"PUSH TO OPEN"  
TEXT ONLY



**10PBS451**  
"PUSH TO OPEN" TEXT  
& HANDICAP LOGO



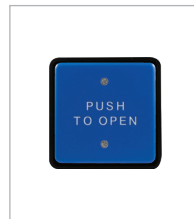
**10PBS45LL**  
HANDICAP LOGO  
ONLY



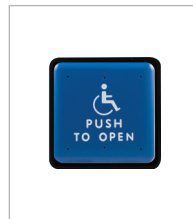
**10PBS4510**  
PLAIN  
FACE



**10PBS45POD**  
"PRESS TO OPERATE  
DOOR" TEXT ONLY



**10PBS45B**  
"PUSH TO OPEN"  
TEXT ONLY,  
WHITE ON BLUE



**10PBS451B**  
"PUSH TO OPEN" TEXT  
& HANDICAP LOGO  
WHITE ON BLUE



**10PBS451AL**  
"PUSH TO OPEN"  
TEXT & ALTERNATE  
HANDICAP LOGO

www.BEAinc.com

© 2018 BEA, Inc. All rights reserved.

4.5 INCH ROUND & SQUARE PUSH PLATES

STAINLESS STEEL ACTUATORS

BEA, Inc.  
RIDC Park West  
100 Enterprise Drive  
Pittsburgh, PA 15275-1213

Customer Service: 800.523.2462  
Technical Support: 800.407.4545

